

THE HAVANA
Various Sizes | 2 & 3 Bedrooms





WELCOME TO THE HAVANA

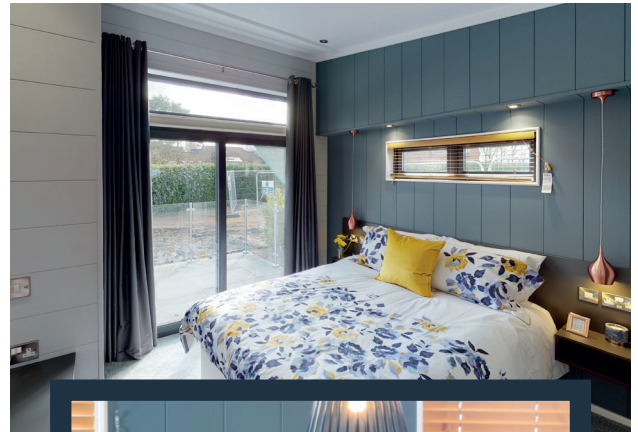
A timeless trendsetter, the Havana combines quality with craftsmanship with two fantastic layout options – the beautifully classic front lounge or the exceptional centre lounge version that forms an entertainment hub, ideal for hosting or relaxation.

Upon entering through one of two sets of sliding patio doors into the open plan living space, you're greeted by warm oak timber beams and contrasting modern interior styling which will wow the senses.

The contemporary kitchen provides ample cupboard space in addition to the full complement of integrated kitchen appliances, and the centre lounge option includes a freestanding island with breakfast bar overhung by beautiful pendant lighting.

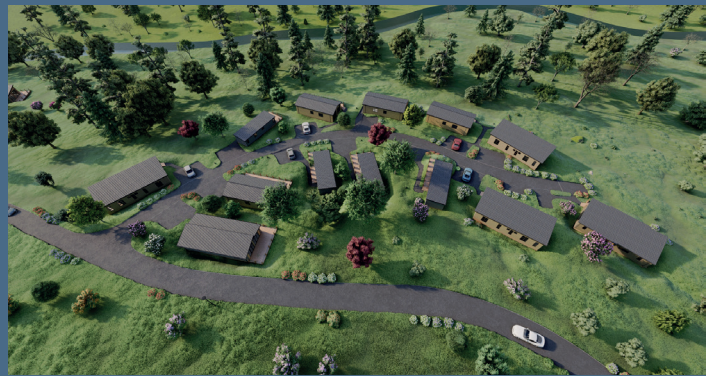
The bedrooms continue the decadent styling with dusky blue feature walls and sumptuous soft furnishings that you can sink into after a long day of exploring.

Available 2- or 3-bedroom options, the flexibility and modern elegance of the Havana makes it a popular choice for lodge owners at The Astbury.



WHY CHOOSE THE ASTBURY?

Set within the tranquil Shropshire countryside, our luxury lodges are nestled upon the gently sloping hillside above a beautiful winding river overhung by woodland. Designed by industry experts, every detail has been carefully thought out, down to the finest detail with each lodge sited on large, individual plots that offer stunning valley views and finished to only the highest of standards – there's no place more perfect to escape everyday life.



First-class Shropshire countryside location



Beautifully manicured grounds with panoramic views



18-hole championship course & putting green



Golf retail shop



Delicious dining at The Astbury Bar & Kitchen



Holiday whenever you want with no closed season



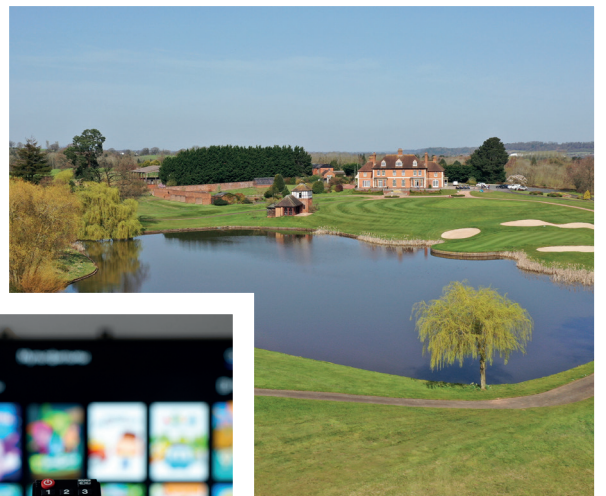
Excellent earning potential with buy-to-let



COMING SOON | Brand-new facilities including tennis courts

THE ASTBURY STANDARD

- ★ Fully furnished with stunning interiors
- ★ High-quality integrated appliances
- ★ Premium smart TVs to lounge
- ★ Sumptuous branded bathrobes
- ★ Golf club storage
- ★ Manufacturer's warranty
- ★ Large, low maintenance decking
- ★ Delivery, siting and all utilities connected



ASK ABOUT OUR PLATINUM PACKAGE UPGRADE!



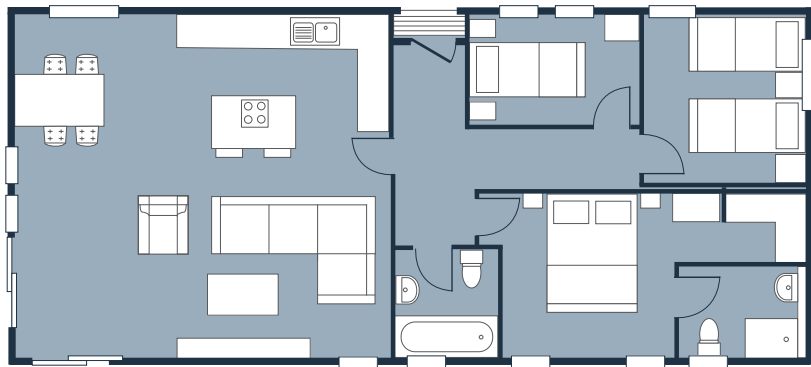
KEY FEATURES OF THE HAVANA

- ✓ Architecturally inspired mono pitch roof
- ✓ Vaulted ceilings, skylights and sliding patio doors
- ✓ Modern two-tone kitchen
- ✓ Island with breakfast bar (centre lounge only)
- ✓ High-quality integrated appliances incl. 4-burner gas hob, oven, microwave, fridge-freezer, dishwasher & wine cooler
- ✓ Dining table with 6 chairs and pendant lighting
- ✓ Shower en-suite to master bedroom

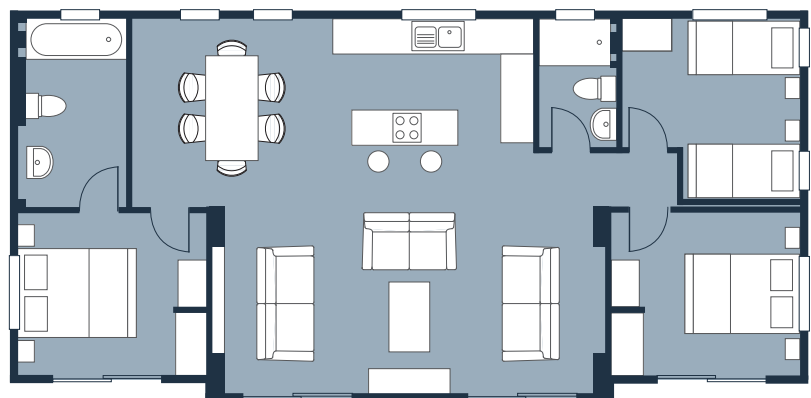
BENEFITS OF OWNERSHIP

- ✓ Simple, turnkey holiday home ownership
- ✓ No stamp duty to pay
- ✓ No legal fees to pay
- ✓ Fully managed sublet service
- ✓ Holiday any time of year with no closed season

The Havana
Front Lounge
45 x 20 | 3 Bedroom



The Havana
Centre Lounge
45 x 22 | 3 Bedroom



For more information, or to arrange your personal viewing appointment, please contact us on:



01746 331779



lodges@theastbury.com

Important notice: These particulars do not form part of any offer or contract and must not be relied upon as statements or representations of fact. Any areas, measurements or distances are approximate. The text, photographs and plans are for guidance only and are not necessarily comprehensive.

All accommodation at The Astbury is sold for HOLIDAY USE ONLY and must not be used as a primary place of residence. Evidence of a permanent address is required before purchasing and on-going annual checks of your permanent home address are a compulsory requirement of ownership.