

the Astbury

LUXURY LODGES

THE HAMPTON

45 X 22 | 2 Bedroom





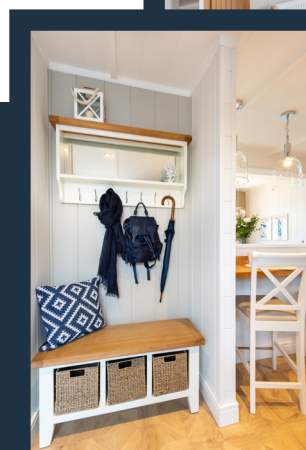
WELCOME TO THE HAMPTON

With a stunning architectural design and front elevation boasting dramatic full length bi-fold doors, you can bring the outdoors inside when the warm weather arrives with the beautiful Hampton lodge.

A plethora of windows and white pitched ceilings accentuate the feeling of opulence and light, whilst the combination of white tongue and groove walls and wooden floors contrast gorgeously against deep blue accents and oversized bell pendant lighting.

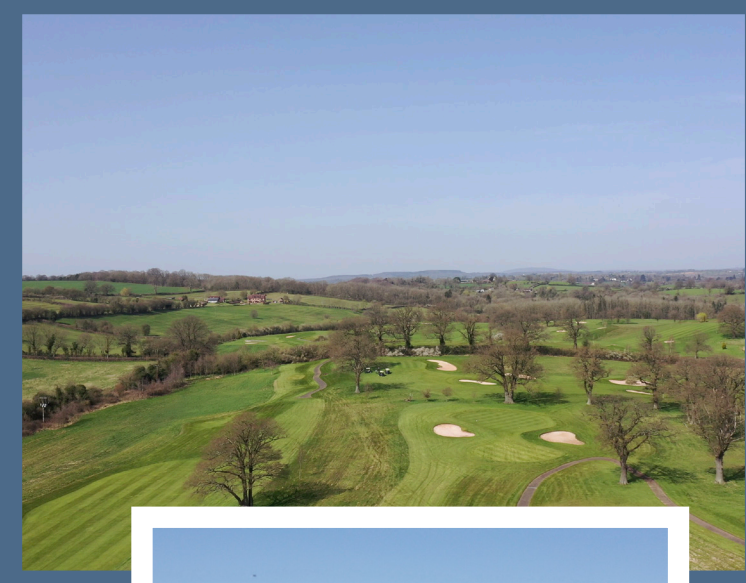
The contemporary country style kitchen comes beautifully finished with cool quartz surfaces and is fully equipped with all appliances – as well as a shelved breakfast bar, which is perfect to enjoy early morning wakeups and panoramic countryside views.

With a twist on the typical lodge layout, it boasts opposing bedrooms, both with en-suite making each a personal private hideaway from the outside world. The timber floors, neutral ocean colours and natural materials make this sophisticated and cleverly designed lodge a truly unique getaway.



WHY CHOOSE THE ASTBURY?

-  First-class location in the heart of Shropshire countryside
-  Beautifully manicured grounds with panoramic views
-  18-hole championship course & putting green
-  Golf retail shop for all your golf needs
-  Delicious dining at The Astbury Bar & Kitchen
-  Holiday whenever you want with no closed season
-  Excellent earning potential with buy-to-let
-  **COMING SOON** | Brand-new facilities including tennis courts



THE ASTBURY STANDARD

- ★ Fully furnished with stunning interiors
- ★ High-quality integrated appliances
- ★ Premium smart TVs to lounge
- ★ Sumptuous branded bathrobes
- ★ Golf club storage
- ★ Manufacturer's warranty
- ★ Large, low maintenance decking
- ★ Delivery, siting and all utilities connected

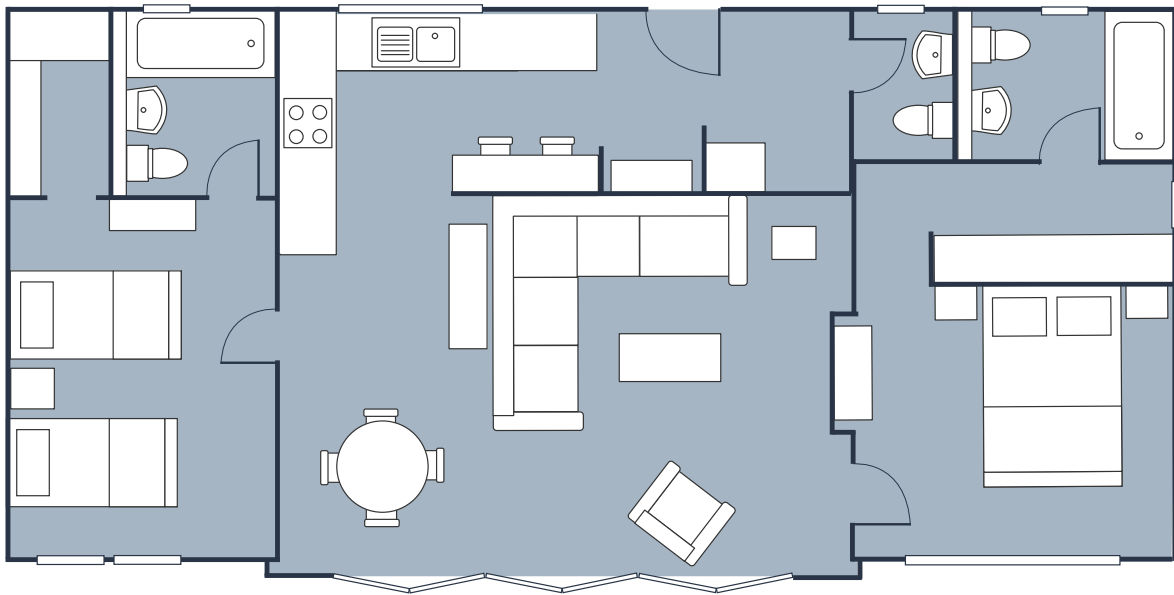
ASK ABOUT OUR
PLATINUM PACKAGE
UPGRADE!

KEY FEATURES OF THE HAMPTON

- ✓ Stunning architecturally inspired exterior
- ✓ High pitched ceilings, exposed beams & timber flooring
- ✓ Six sectioned bi-fold doors
- ✓ Country shaker style kitchen with breakfast bar
- ✓ Integrated appliances incl. five-burner gas hob, oven, microwave, dishwasher, fridge/freezer, dual washer/dryer & wine cooler
- ✓ Shower en-suites to both bedrooms
- ✓ Walk-in wardrobe to master bedroom

BENEFITS OF OWNERSHIP

- ✓ Simple, turnkey holiday home ownership
- ✓ No stamp duty to pay
- ✓ No legal fees to pay
- ✓ Fully managed sublet service
- ✓ Holiday any time of year with no closed season



The Hampton | 45 x 22 | 2 Bedroom

For more information, or to arrange your personal viewing appointment, please contact us on:



01746 331777



lodges@theastbury.com

Important notice: These particulars do not form part of any offer or contract and must not be relied upon as statements or representations of fact. Any areas, measurements or distances are approximate. The text, photographs and plans are for guidance only and are not necessarily comprehensive.

All accommodation at The Astbury is sold for HOLIDAY USE ONLY and must not be used as a primary place of residence. Evidence of a permanent address is required before purchasing and on-going annual checks of your permanent home address are a compulsory requirement of ownership.